

reflecta gmbh  
Mercurstrasse 8  
72184 Eutingen i.G.  
Germany

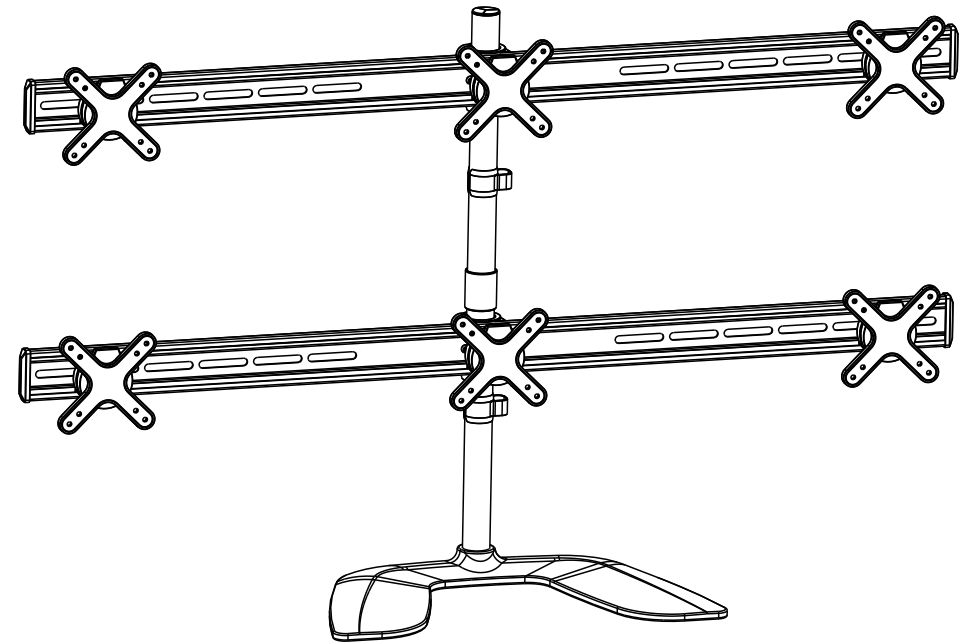
mail@reflecta.de  
www.reflecta.de

INSTALLATION MANUAL

# Monitor Table Stand

## Maintenance

- Check that the bracket is secure and safe to use at regular intervals(at least every three months).
- Please contact your distributor if you have any questions.



**CAUTION:** DO NOT EXCEED  
RATED LISTED WEIGHT. SERIOUS  
INJURY OR PROPERTY DAMAGE  
MAY OCCUR!

23282



75x75  
100x100



8kgx6  
(17.6lbs)x6  
RATED

ISSUED: OCT. 2014

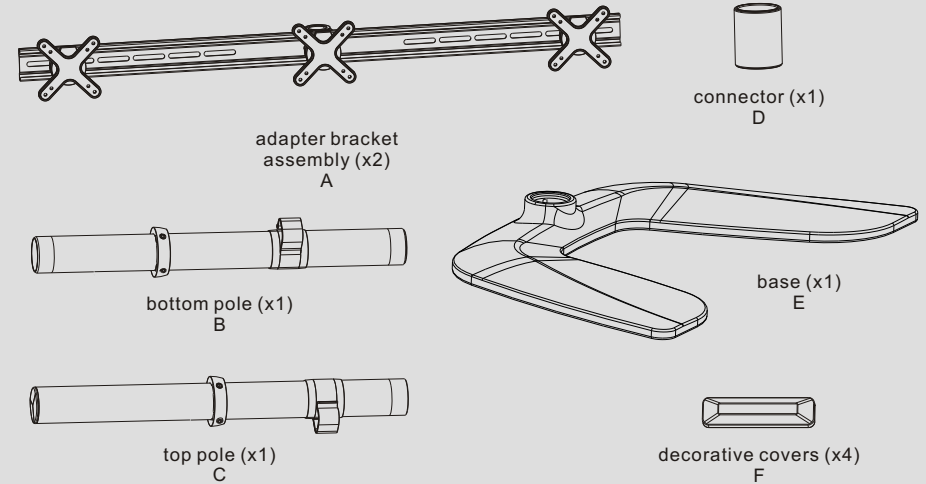
**NOTE:** Read the entire instruction manual before you start installation and assembly.

## WARNING

- Do not begin the installation until you have read and understood all the instructions and warnings contained in this installation sheet. If you have any questions regarding any of the instructions or warnings, please contact your local distributor.
- This mounting bracket was designed to be installed and utilised **ONLY** as specified in this manual. Improper installation of this product may cause damage or serious injury.
- Make sure that the supporting surface will safely support the combined weight of the equipment and all attached hardware and components.
- Always use an assistant or mechanical lifting equipment to safely lift and position the equipment.
- Tighten screws firmly, but do not over tighten. Over tightening can cause damage to the items, This greatly reduces their holding power.
- This product is intended for indoor use only. Using this product outdoors could lead to product failure and personal injury.

## Component Checklist

**IMPORTANT:** Ensure that you have received all parts according to the component checklist prior to installation. If any parts are missing or faulty, telephone your local distributor for a replacement.



### Package Mx6



M4x14 (x4)  
M-A



M5x14 (x4)  
M-B



D5 washer (x4)  
M-C

### Package P

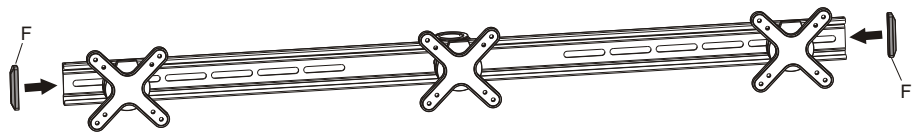


3mm Allen key (x1)  
P-A

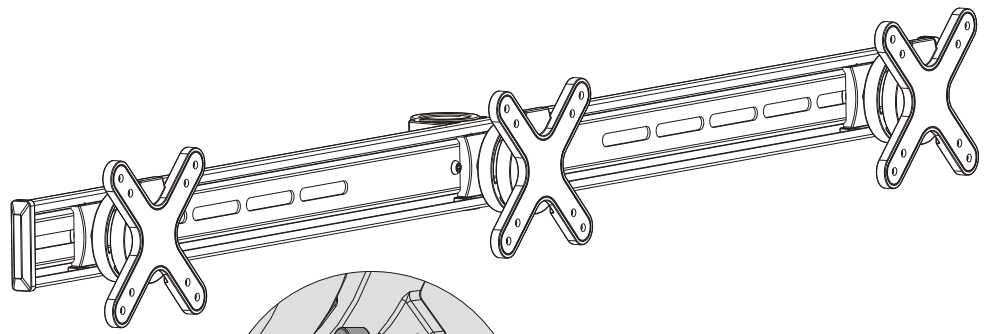


4mm Allen key (x1)  
P-B

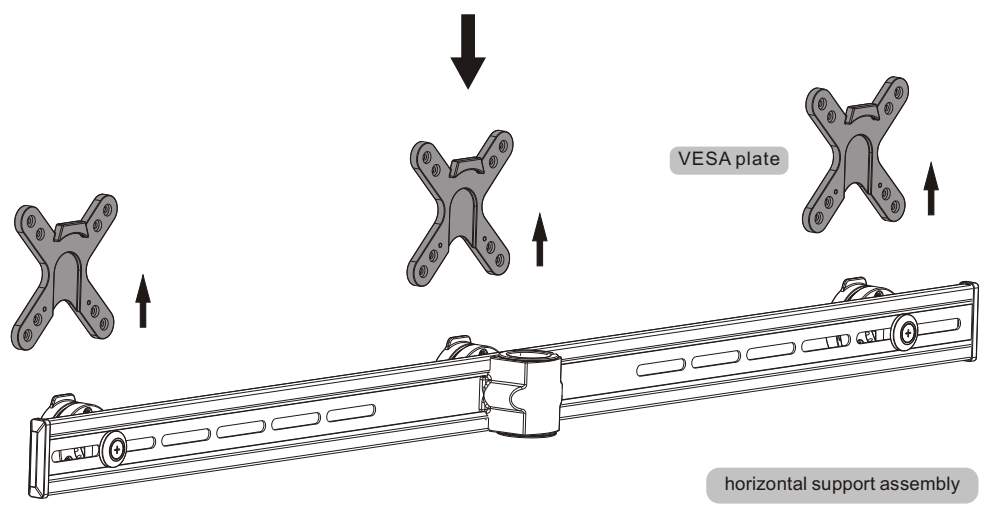
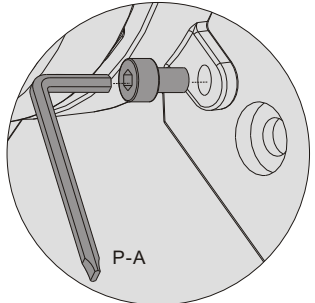
### 1. Installing the Decorative Covers



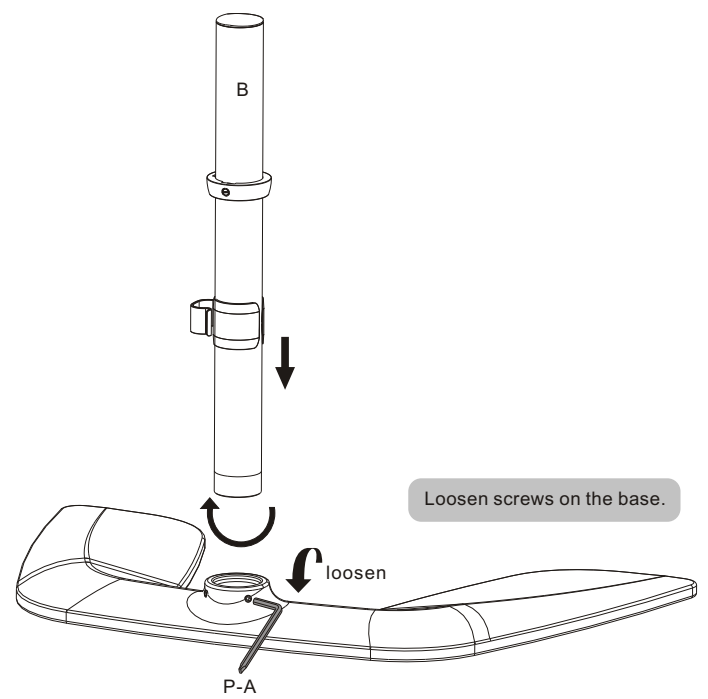
### 2. Separating the VESA Plates



- Use Allen key to loosen the screws in order to separate the VESA plate from the adapter bracket assembly.
- Retain these screws for later use.

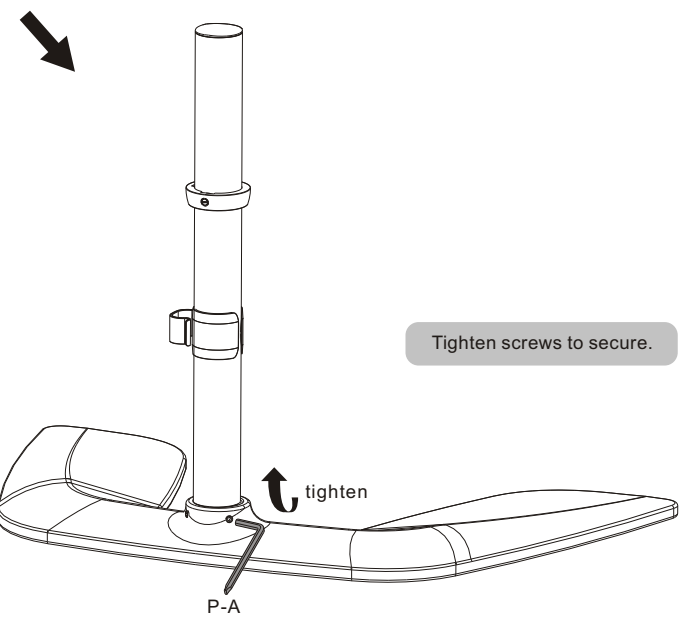


### 3. Assembling the Pole to Base



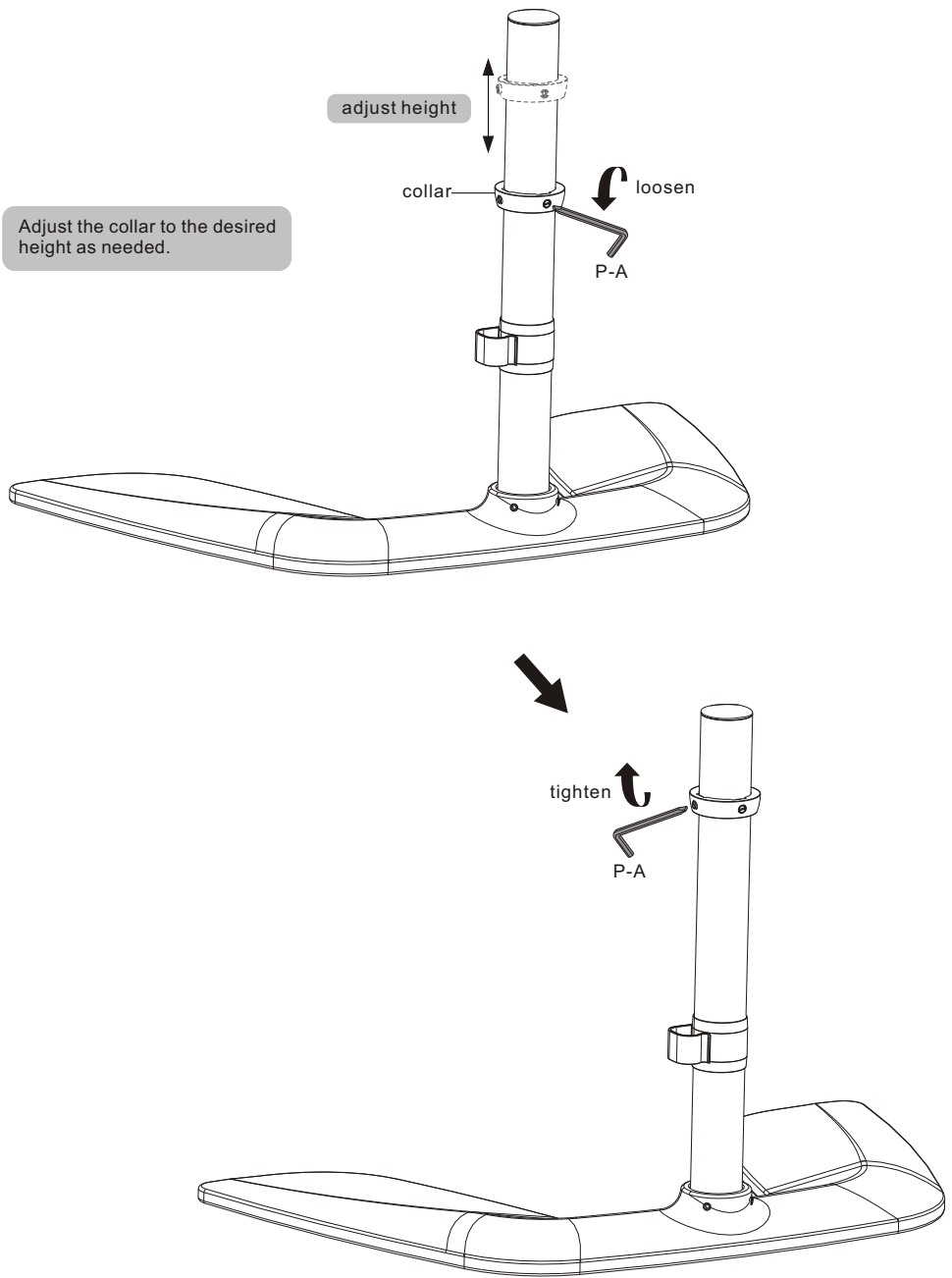
Loosen screws on the base.

The pole is screwed into the threaded hole of the base.

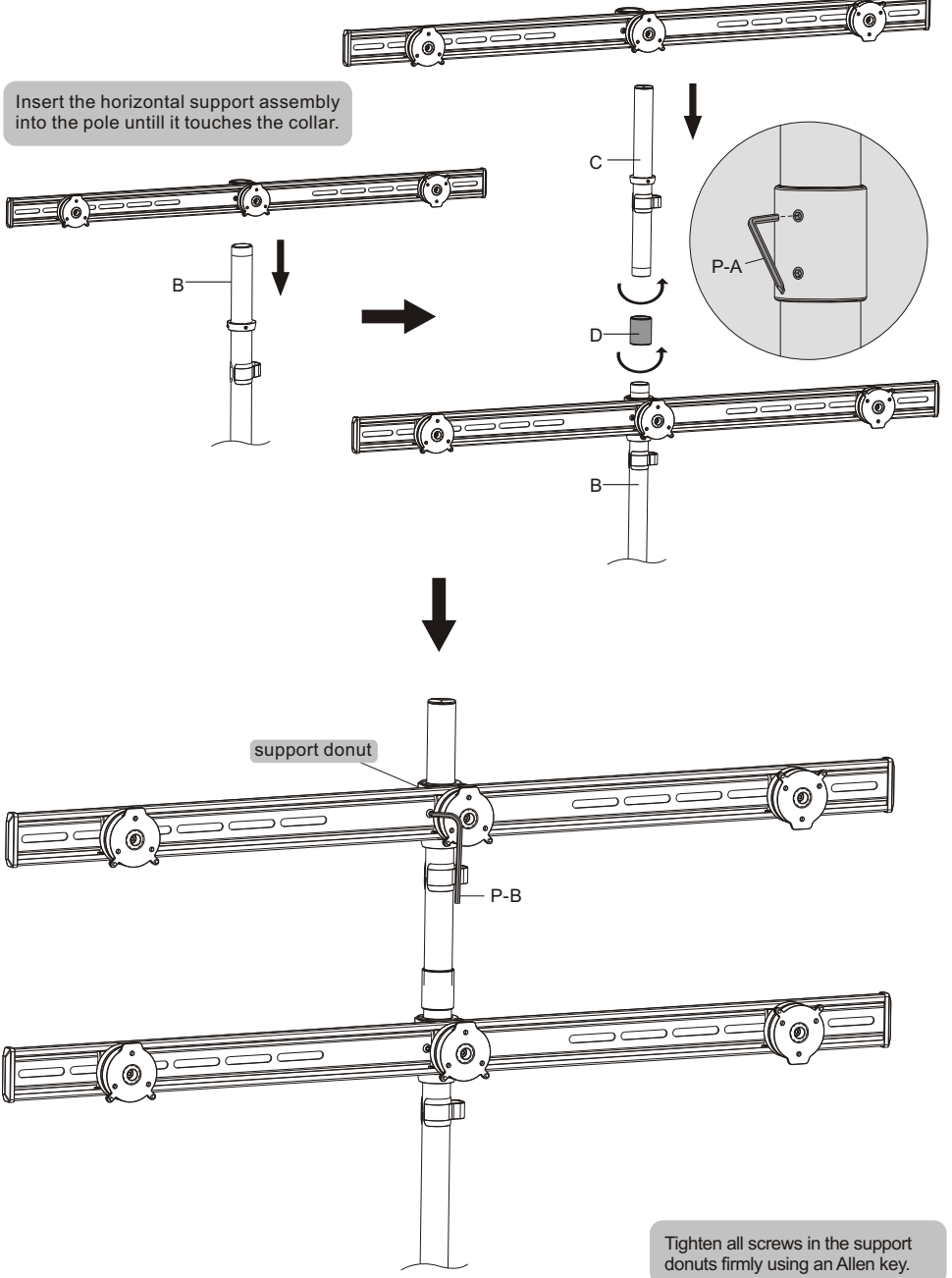


Tighten screws to secure.

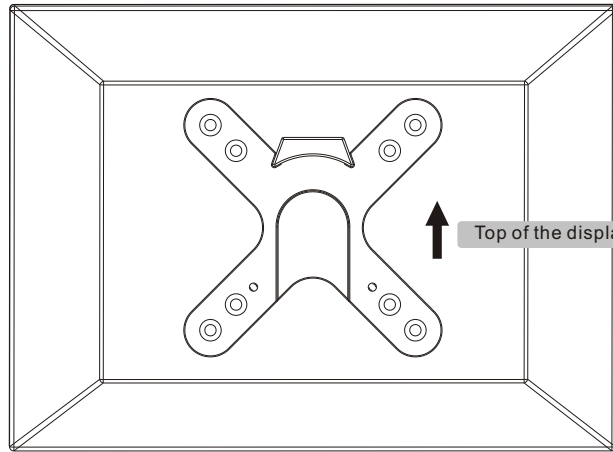
# Adjusting the Height



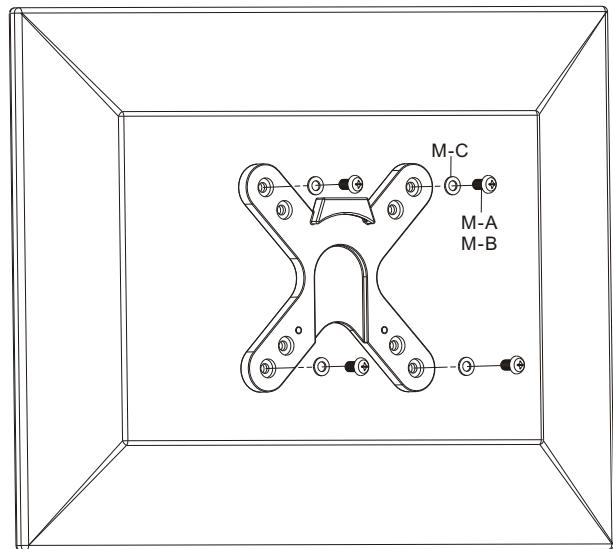
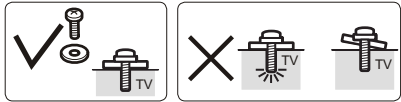
# 4. Installing the Horizontal Support Assemblies



## 5. Installing the VESA Plates



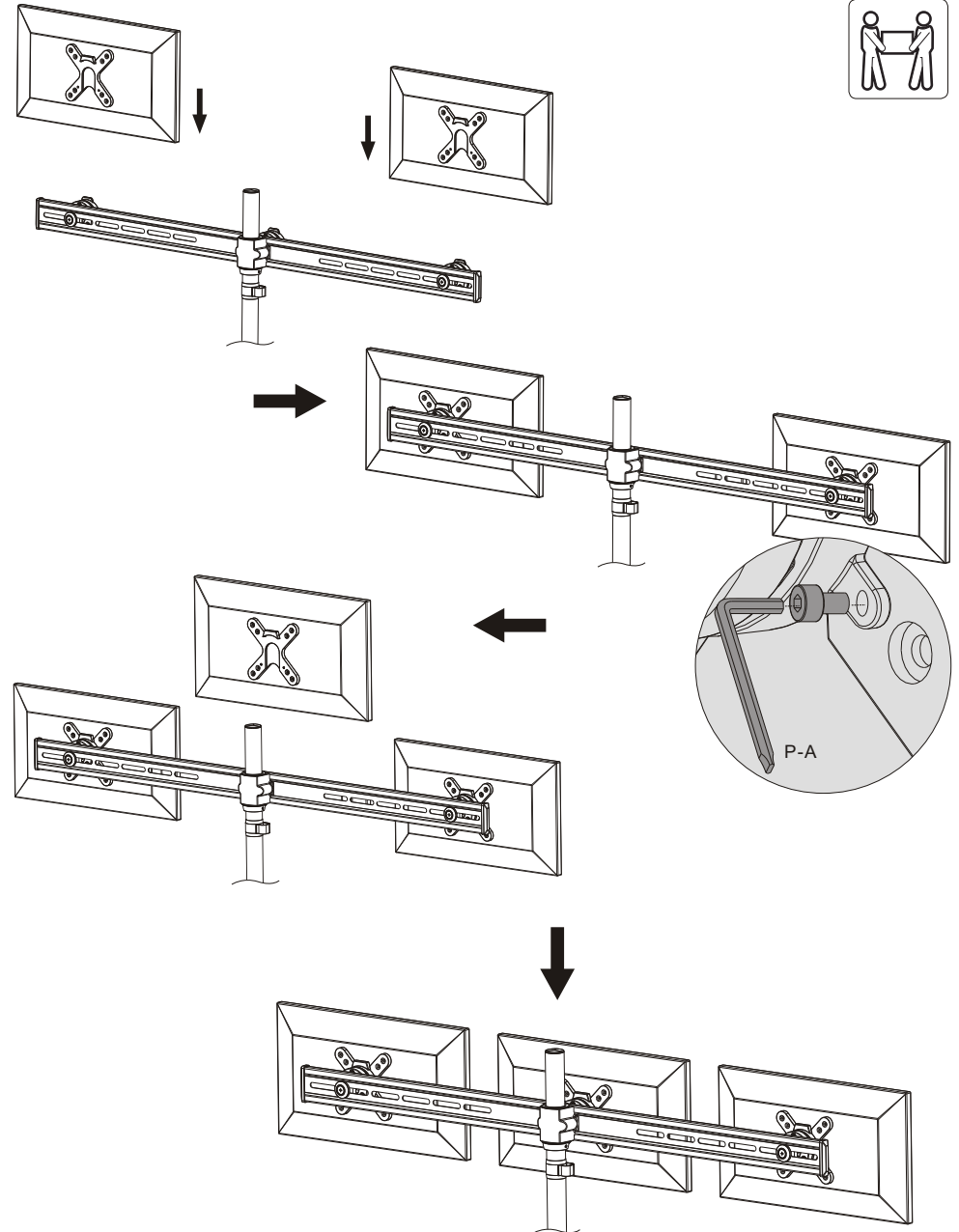
Top of the display



Screw the VESA plate onto the display.

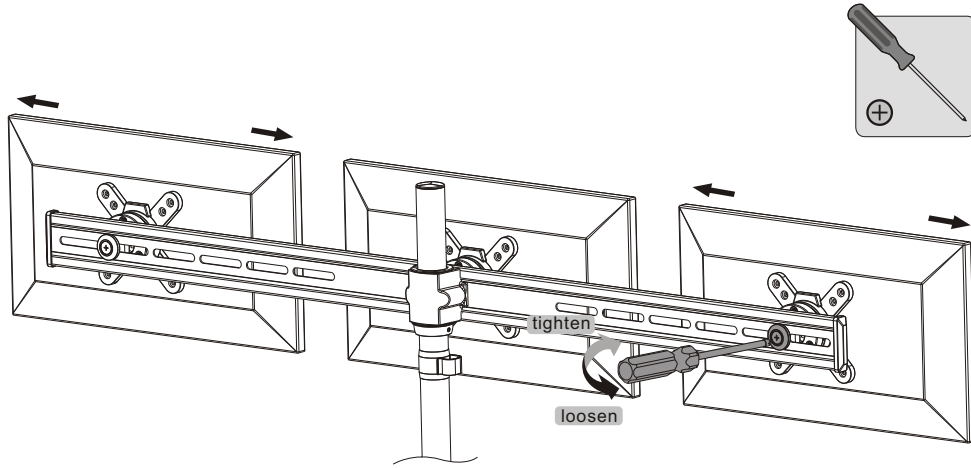
**⚠ Tighten all screws but do not over tighten.**

## 6. Installing the Displays



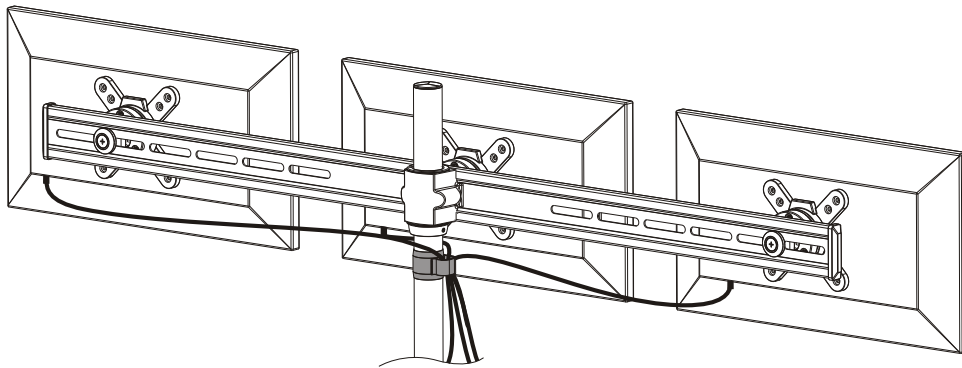
Insert the VESA plate onto the mount and use the previously removed screws to secure them. Make sure the display is safely secured before finally releasing.

## 7. Displays Horizontal Adjustment



- Loosen the screws with a proper screwdriver.
- Slide the bracket assembly to desired position.
- Tighten screws to lock the bracket assembly in place.

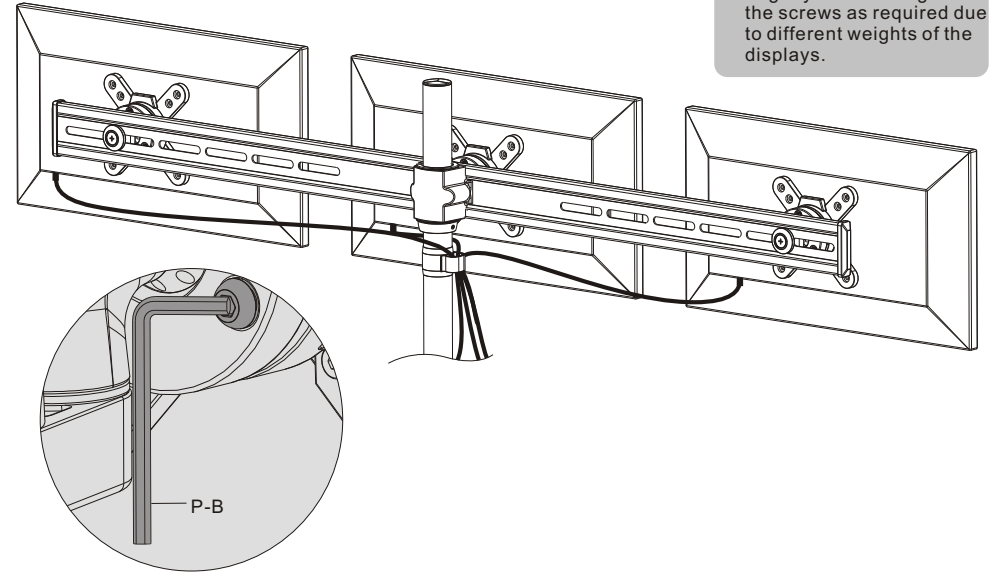
## 8. Cable Management



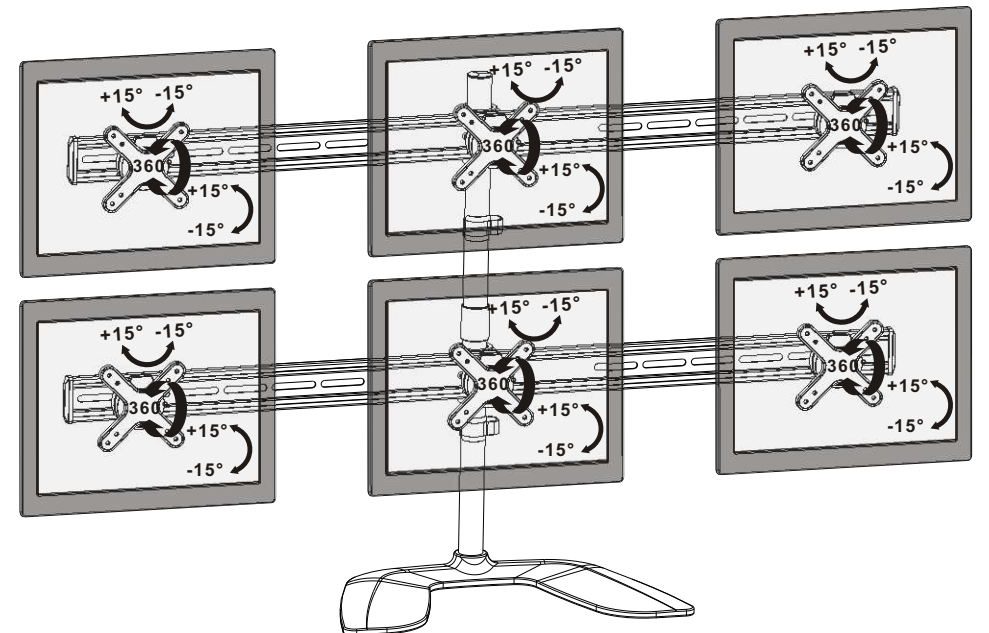
Use clip for routing the cables.

**NOTE:** Leave slack in the cable for arm movement.

## 9. Adjustment



Slightly loosen or tighten the screws as required due to different weights of the displays.



Adjust to desired position or tilt.