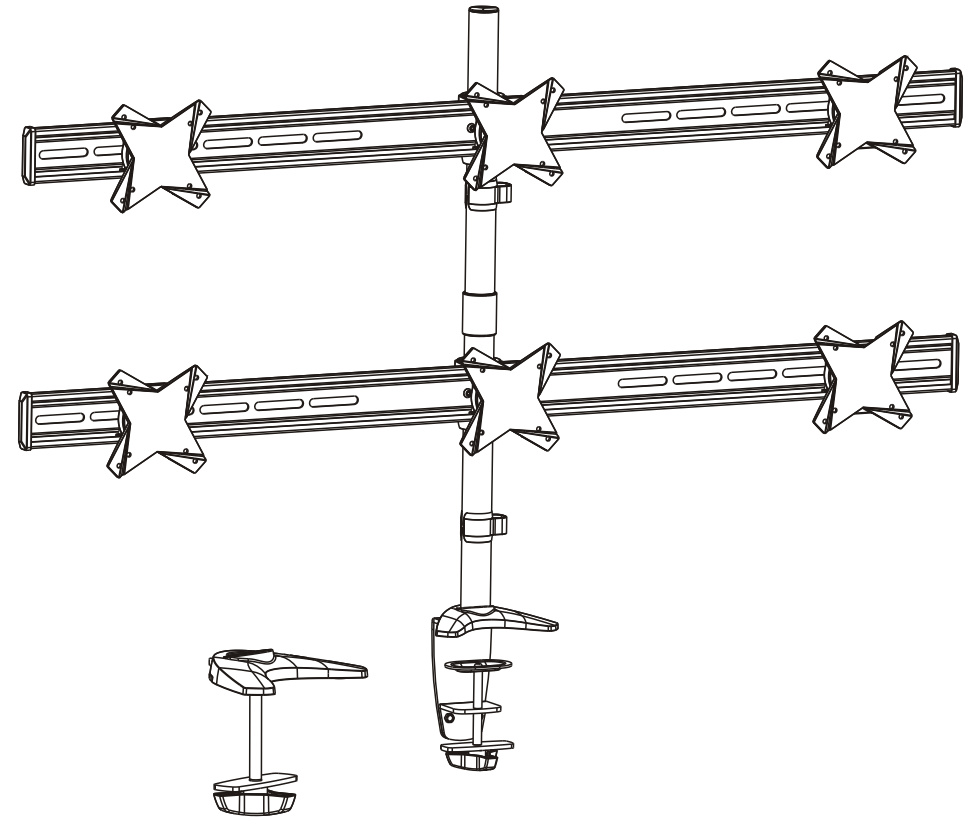


reflecta gmbh
Merkurstrasse 8
72184 Eutingen i.G.
Germany

mail@reflecta.de
www.reflecta.de

INSTALLATION MANUAL

Monitor Desk Mount



CAUTION: DO NOT EXCEED
RATED LISTED WEIGHT. SERIOUS
INJURY OR PROPERTY DAMAGE
MAY OCCUR!

23271



75x75
100x100



8kgx6
(17.6lbs)x6
RATED

ISSUED: SEPT. 2014

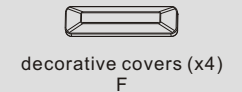
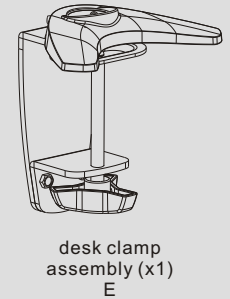
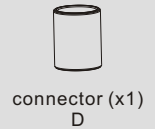
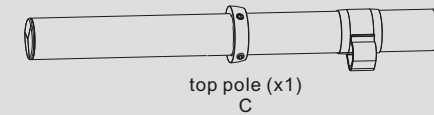
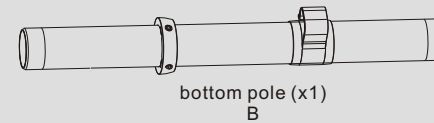
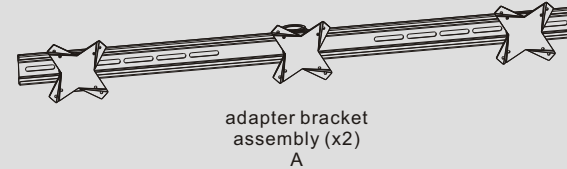
NOTE: Read the entire instruction manual before you start installation and assembly.

WARNING

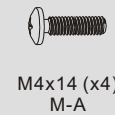
- Do not begin the installation until you have read and understood all the instructions and warnings contained in this installation sheet. If you have any questions regarding any of the instructions or warnings, please contact your local distributor.
- This mounting bracket was designed to be installed and utilised **ONLY** as specified in this manual. Improper installation of this product may cause damage or serious injury.
- Make sure that the supporting surface will safely support the combined weight of the equipment and all attached hardware and components.
- Always use an assistant or mechanical lifting equipment to safely lift and position the equipment.
- Tighten screws firmly, but do not over tighten. Over tightening can cause damage to the items, This greatly reduces their holding power.
- This product is intended for indoor use only. Using this product outdoors could lead to product failure and personal injury.

Component Checklist

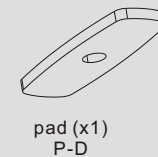
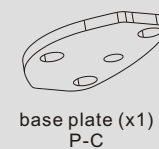
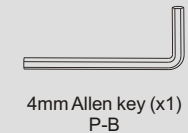
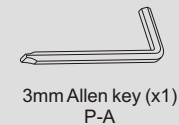
IMPORTANT: Ensure that you have received all parts according to the component checklist prior to installation. If any parts are missing or faulty, telephone your local distributor for a replacement.



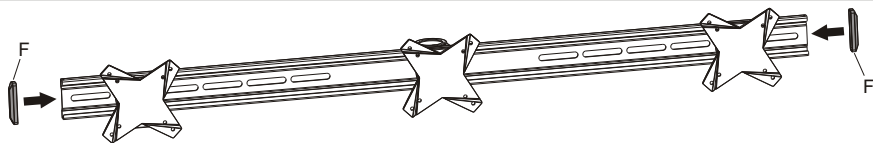
Package Mx6



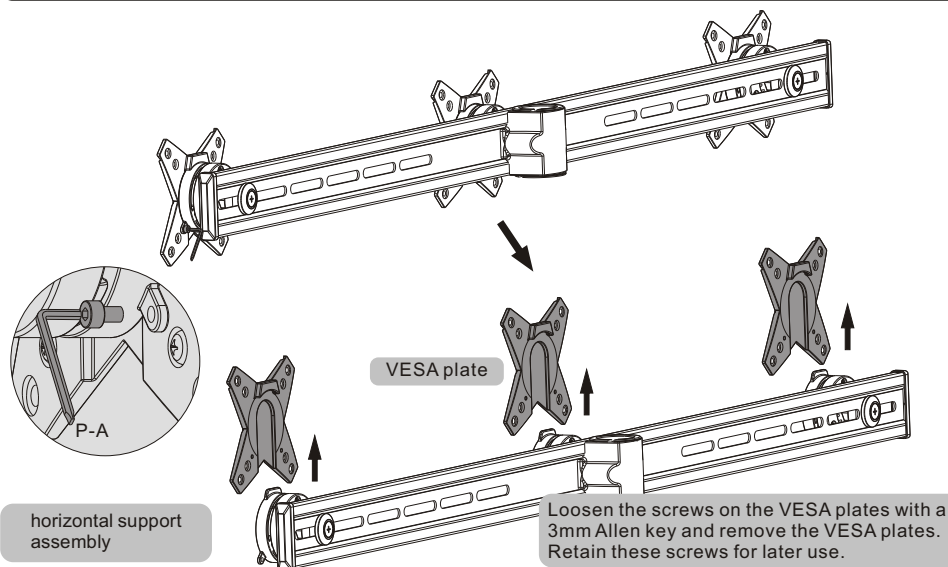
Package P



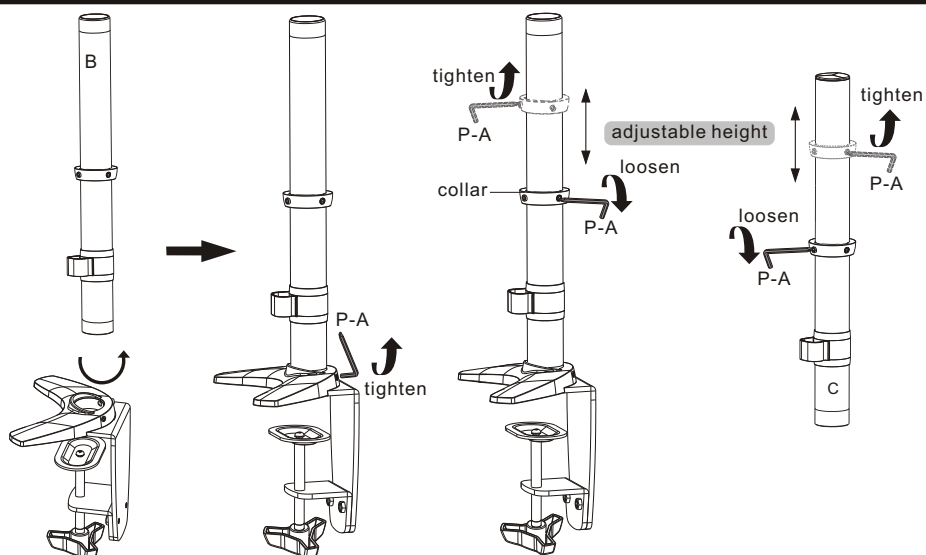
1. Installing the Decorative Covers



2. Removing the VESA Plates

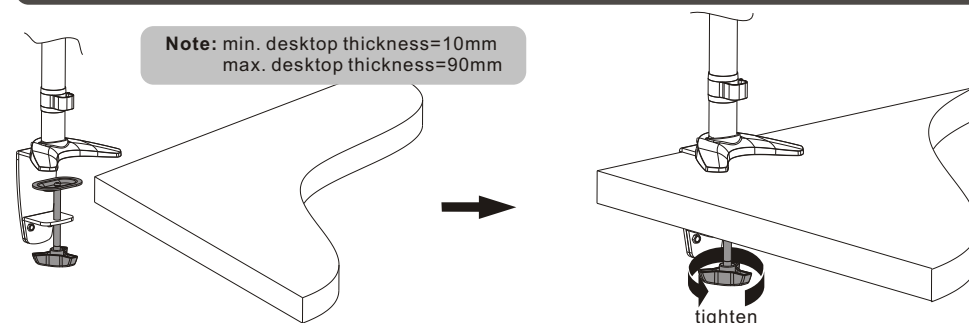


3. Assembling the Pole and Desk Clamp



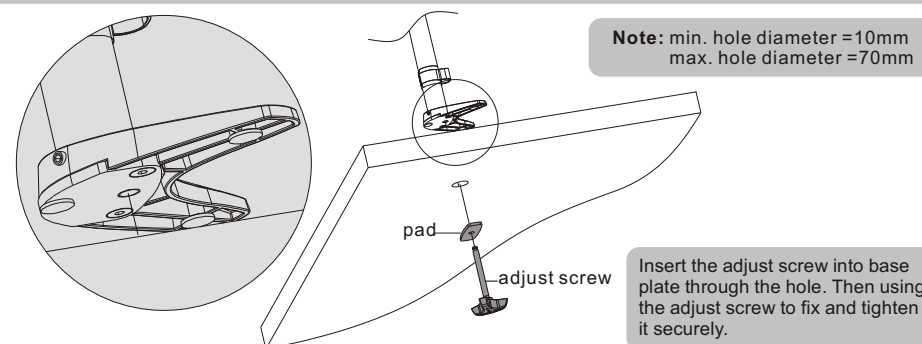
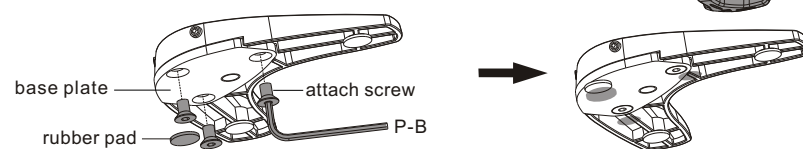
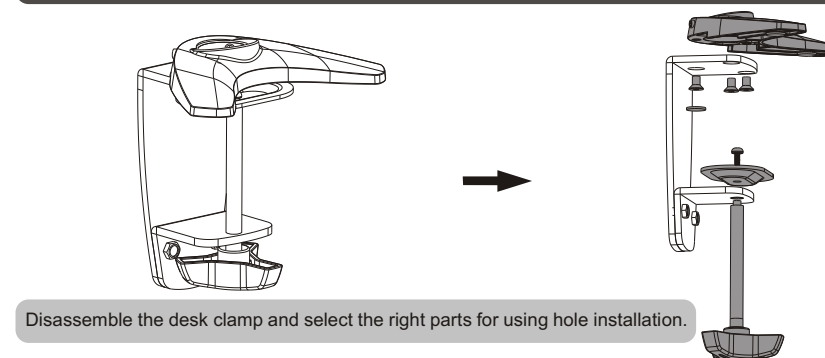
4. Attaching to the Desk

4a. Edge Installation



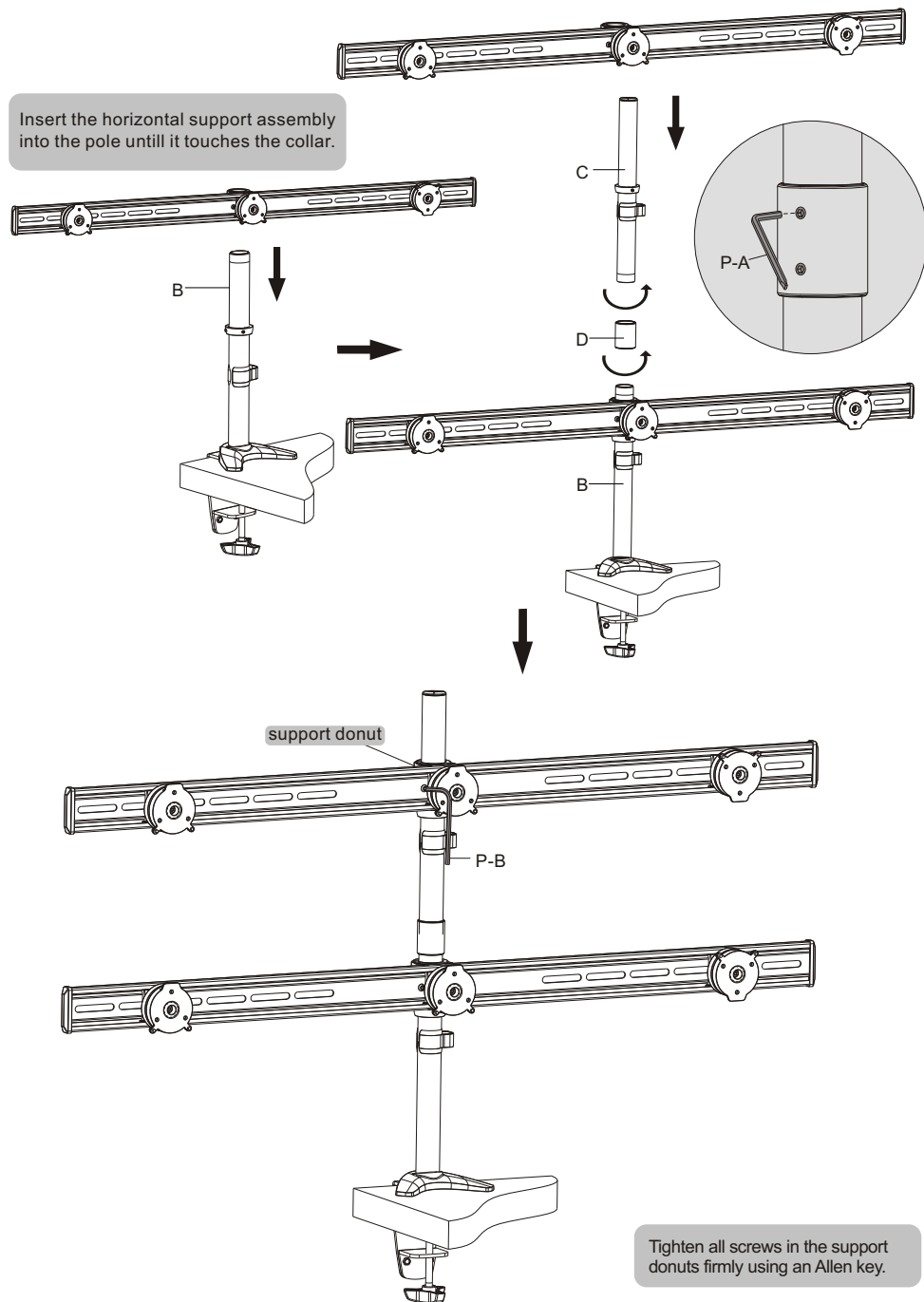
Turn the knob to make clamp fit to desk edge, then secure it tightly.

4b. Hole Installation



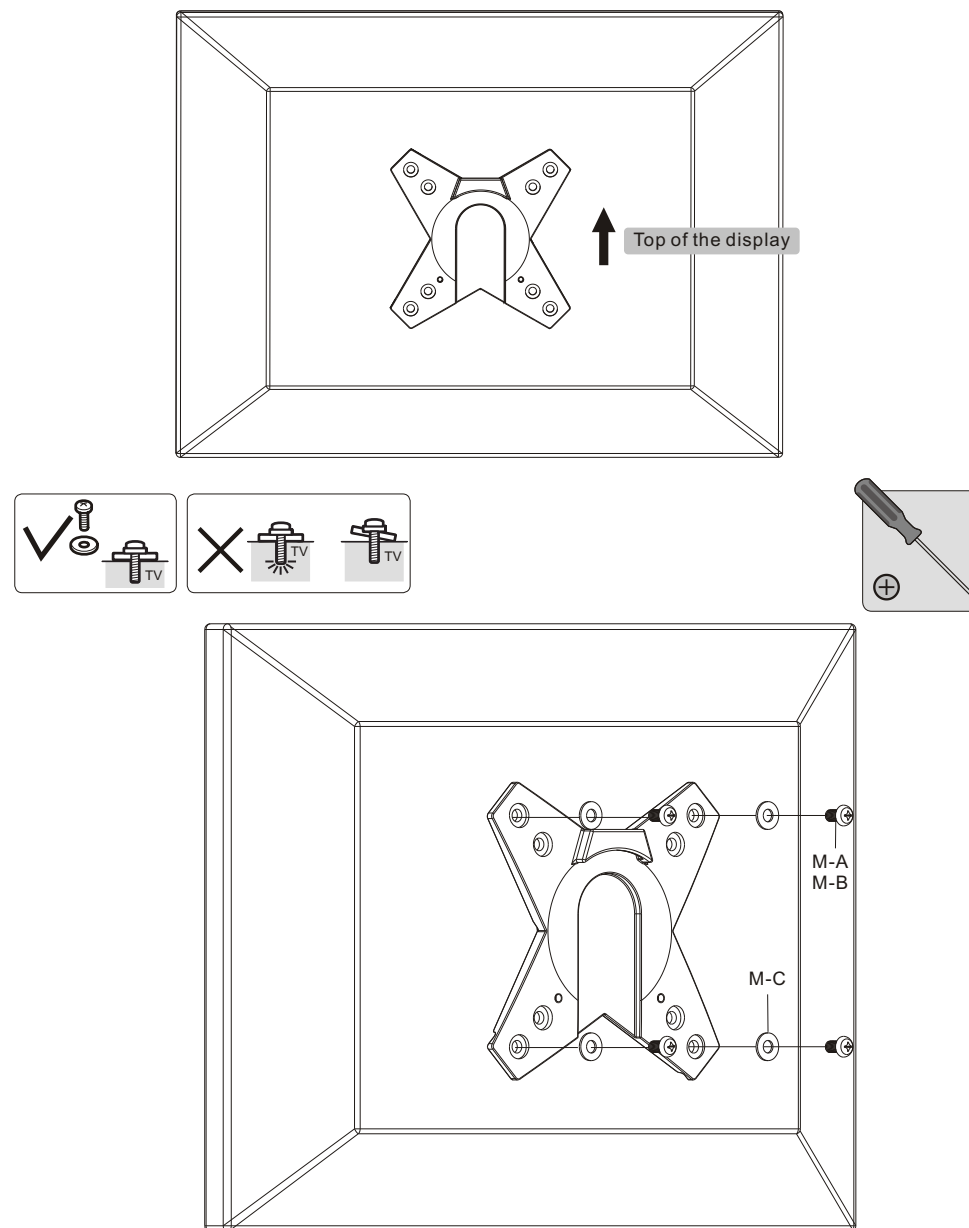
5. Installing the Horizontal Support Assembly

Insert the horizontal support assembly into the pole until it touches the collar.



Tighten all screws in the support donuts firmly using an Allen key.

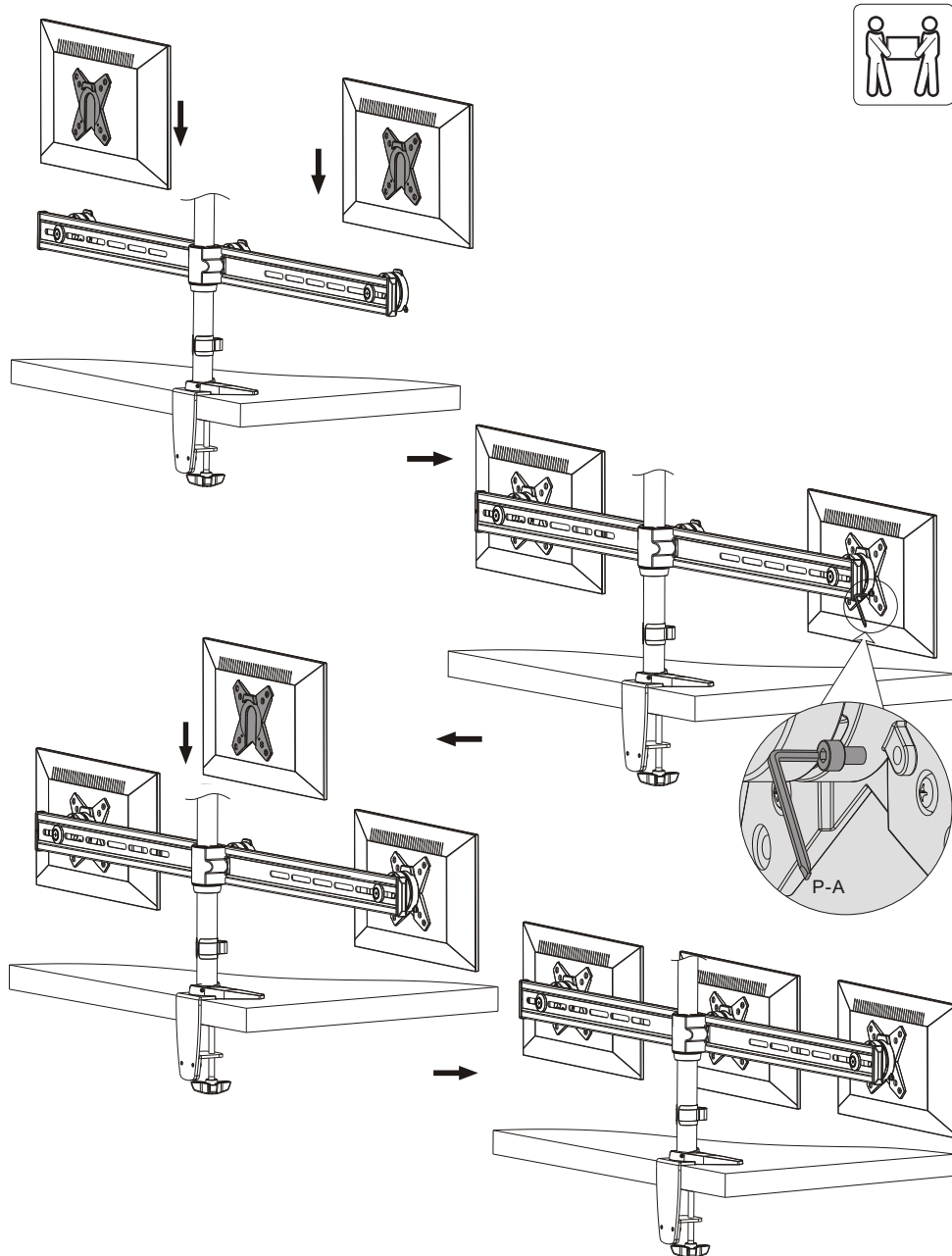
6. Installing the VESA Plates



Screw the VESA plate onto the display.

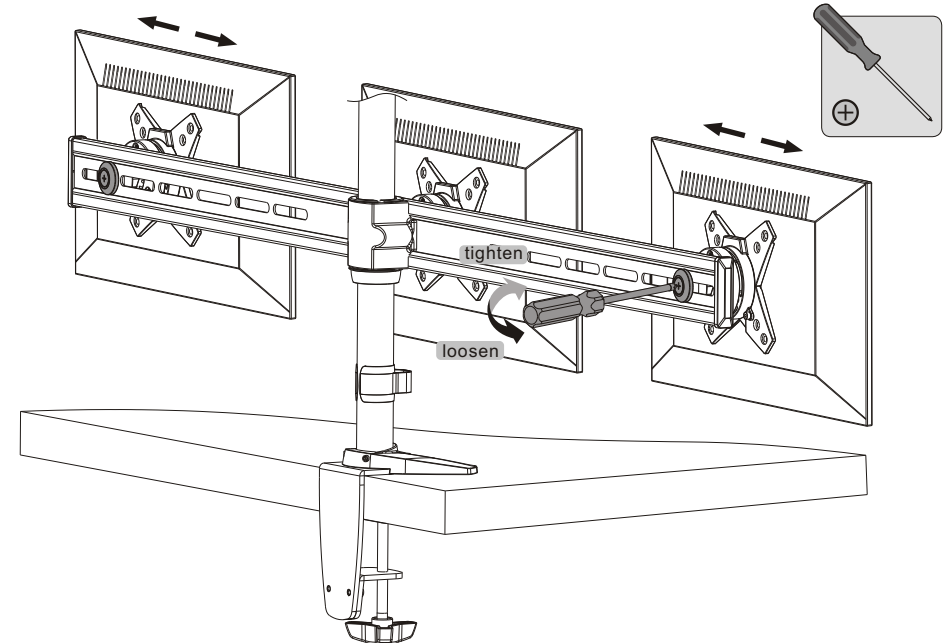
⚠️ Tighten all screws but do not over tighten.

7. Installing the Displays



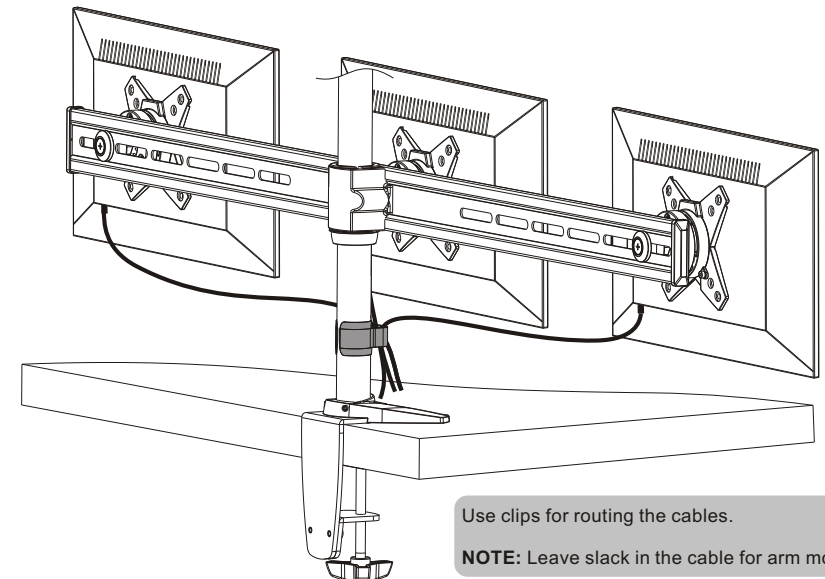
Insert the VESA plate onto the mount and use the previously removed screws to secure them. Make sure the display is safely secured before finally releasing.

8. Display Horizontal Adjustment



Loosen the screws with a proper screwdriver. Slide the bracket assembly to desired position and then tighten screws to lock the bracket assembly in place.

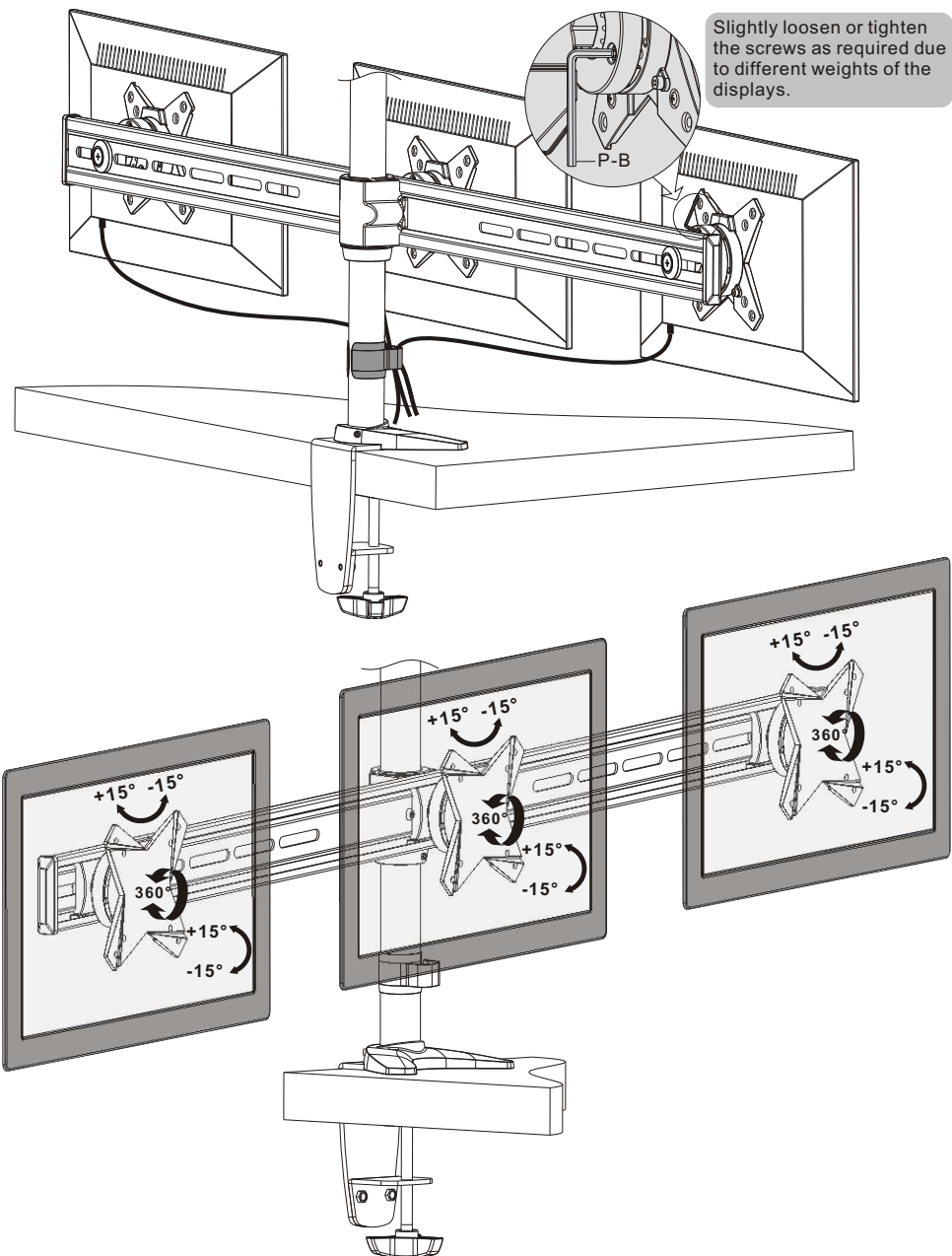
9. Cable Management



Use clips for routing the cables.

NOTE: Leave slack in the cable for arm movement.

10. Adjustment



Adjust to desired position or tilt.

Maintenance

- Check that the bracket is secure and safe to use at regular intervals (at least every three months).
- Please contact your distributor if you have any questions.