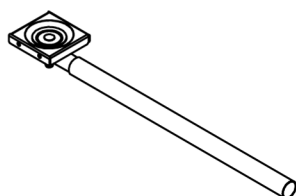
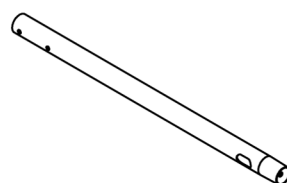
TV MOUNTING
PLATE (x1)

(A)



EXTENSION TUBE (x1)

(B)



TUBE (x1)

(C)

MOUNTING
ARMS (x2)

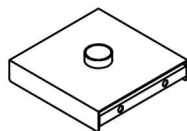
(D)

BACK PLASTIC
COVER (x1)

(E)

PLASTIC
COVER (x1)

(F)

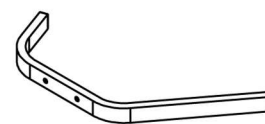


PEDESTAL (x1)

(G)

LEFT BOTTOM
TUBE (x1)

(H)

RIGHT BOTTOM
TUBE (x1)

(I)



WHEEL (x4)

(J)

ALLEN WRENCH
NO.6 (x1)

(K)

WRENCH
NO.12 (x1)

(L)

SCREW BH 3/8"
L58mm (x5)

(1)

SCREW CAP
5/16" L3/4
WITH 2 WASHERS (x6)

(2)

NYLON NUT
 $\phi 5/16"$ (x2)

(3)

NYLON NUT
 $\phi 3/8"$ (x4)

(4)

WASHER
 $\phi 8.5^* \phi 25^* T=3$ (x2)

(5)

WASHER
 $\phi 3/8"$ (x8)

(6)

WASHER
 $\phi 9.5^* \phi 45$ (x1)

(7)

SPRING WASHER
 $\phi 3/8"$ (x8)

(8)

For TV

M4

SPRING
WASHER
(x4)

M5

SPRING
WASHER
(x4)

M6

SPRING
WASHER
(x4)

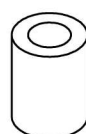
M8

SPRING
WASHER
(x4)WASHER
 $\phi 6^* \phi 18$ (x4)

(9)

WASHER
 $\phi 8^* \phi 18$ (x4)

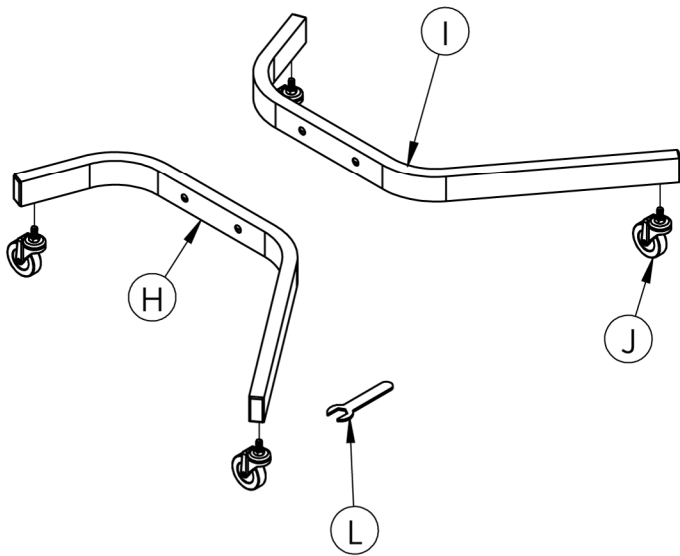
(10)

SLEEVE $\phi 8.5^*$
 $\phi 15^* L20$ mm
(x4)

(11)

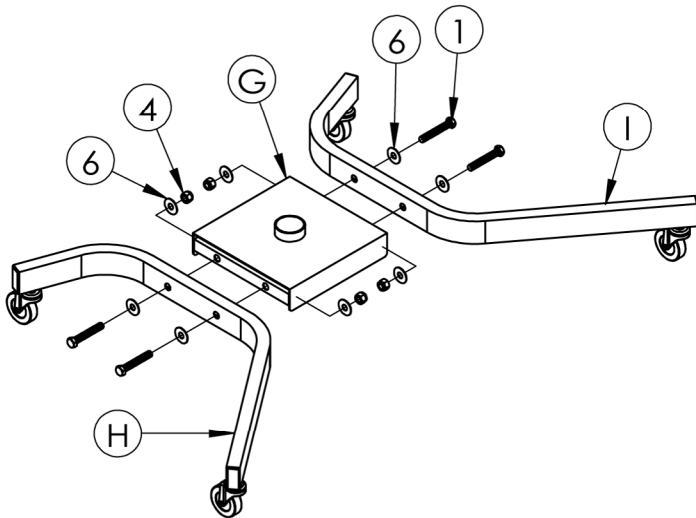
Assembly steps

STEP 1



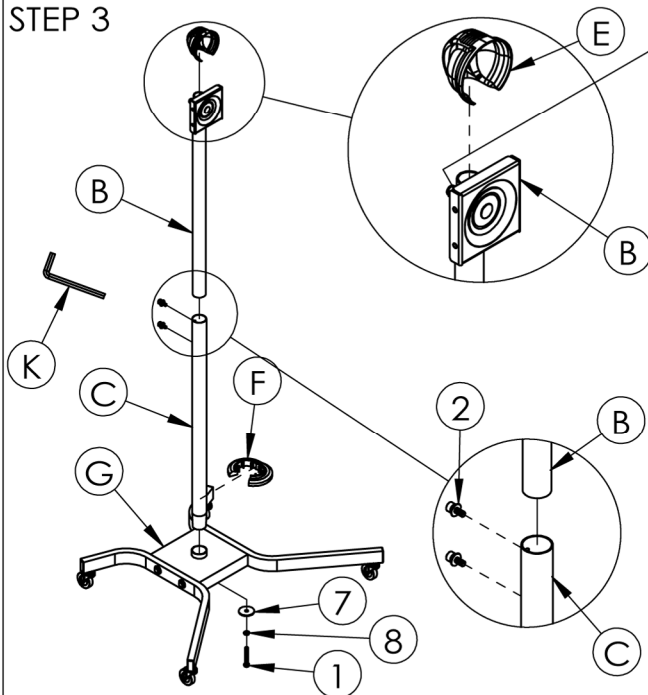
Insert the weels (J) on left and right bottom tube legs (H,I) with allen wrench (L).

STEP 2



Screw left and right bottom tube legs (H,I) on pedestal (G) .

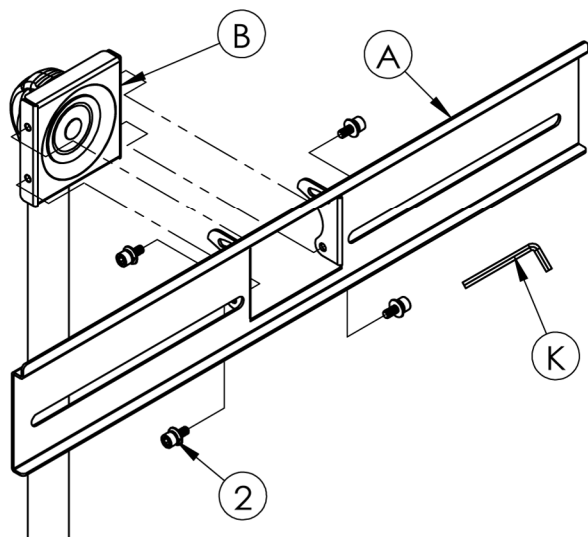
STEP 3



Adjusting this nut for rotation

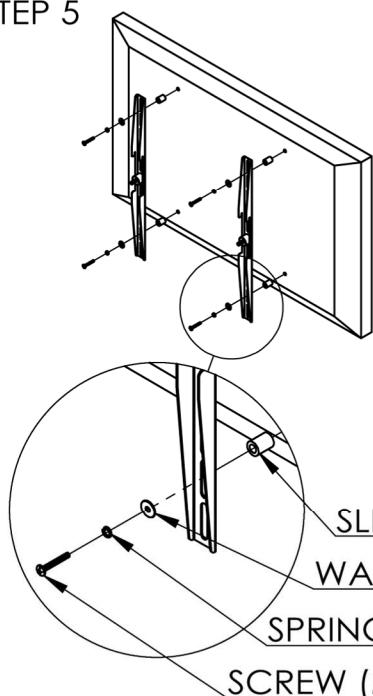
Insert the extension tube (B) on to the tube (C). Then install the tube (C) to the pedestal (G) and then put the plastic cover (F) on tube.

STEP 4

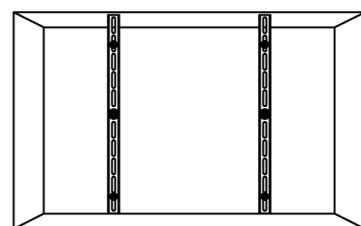


To fix the TV mounting plate (A) on the top of extension tube (B) with screw (3).

STEP 5



To install the mounting arms (E) on the back of TV:
Locate the mounting screw holes on the back of TV and attached the mounting arms (E) with screw (M4 or M5 or M6 or M8) which best fit your TV's mounting holes.



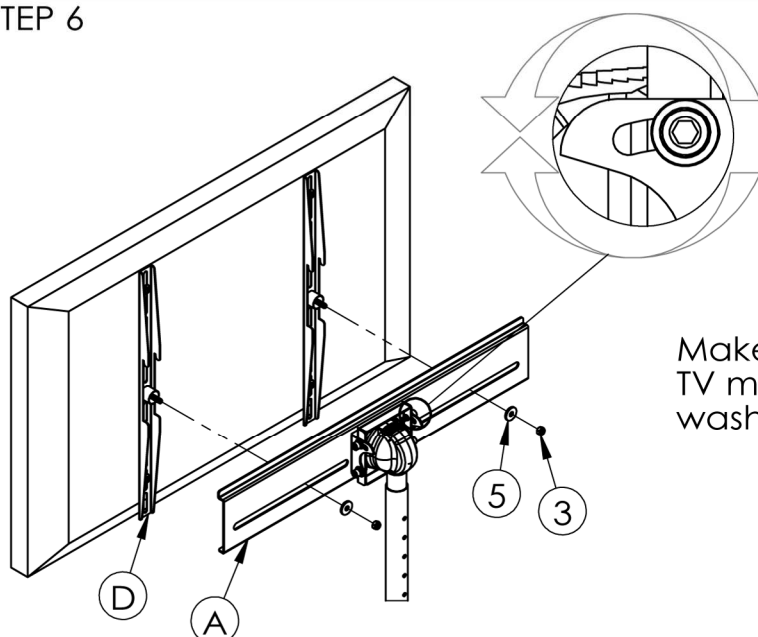
SLEEVE (11) OPTIONAL

WASHER (9) or (10)

SPRING WASHER (M4 or M5 or M6 or M8)

SCREW (M4 or M5 or M6 or M8)

STEP 6



Make sure the Mounting arms (D) fixed on the TV mounting plate (A) by nylon nut (4) and washer (6) well.